

### **HAND RAIL PARTS**

|        |   |
|--------|---|
| C101   | Rail Support, (left front or right rear) with bolts               |
| C102   | Rail Support, (right front or left rear) with bolts               |
| C104   | Bent Rail (specify: stand, side, length of board)                 |
| C106   | Straight Rail (specify: 14' or 16' board on stand)                |
| 107    | Hand Rail Plug  |
| C206   | Rail Bracket (brz) requires: (2) 207 & (2) SF118                  |
| 207    | Stainless Steel Rail Clamp (order bolt from lengths listed below) |
| SF117  | 5/16" x 1/2" Stainless Steel Rail Clamp Bolt                      |
| SF118  | 5/16" x 5/8" Stainless Steel Rail Clamp Bolt                      |
| SF119  | 5/16" x 3/4" Stainless Steel Rail Clamp Bolt                      |
| SF120  | 5/16" x 7/8" Stainless Steel Rail Clamp Bolt                      |
| SB404L | Aluminum Rail Bracket-Painted, with bolts                         |
| SB404R | Aluminum Rail Bracket-Painted, with bolts                         |

### **STAND SHIMS, BOARD CHANNELS, AND RUBBER PIECES**

|                  |   |
|------------------|---|
| MP107-R          | Shim Set-Round: Plastic, 4 each of 3 thicknesses & 6 phenolic                           |
| MP108-S          | Shim Set-Square: Plastic, 4 each of 7 thicknesses                                       |
| MP110-6-C-WG/A   | Rubber Channel Set-6" with glue and instructions  |
| MP112-30-C-WG/A  | Rubber Channel Set-30" with glue and instructions                                       |
| MP112-30-C-WG/NA | Rubber Channel Set-30" with glue kit - no adapter                                       |
| MP112-112-30-C   | Rubber Channel Set-30" without glue   |
| MP115            | Complete Glue Kit with adapter  |
| MP115-NA         | Glue Kit without adapter  |
| PM108L           | Corner Piece-Left (plugs board tip-after 1975)  |
| PM108R           | Corner Piece-Right (plugs board tip-after 1975)   |
| PM112            | Rubber Grommet - plugs tip center<br>(pre-1975 board Includes 3, after 1975 includes 1) |

### **GREASE**

|       |                                 |
|-------|---------------------------------|
| PM110 | Grease Gun                      |
| PM111 | Mystik JT-6 Grease (3 oz. tube) |

### **STAND DECK ANCHORS**

|               |   |
|---------------|---|
| 900-SS        | Single Bronze Anchor Castings - price per each<br>Includes: 5/8" x 1" steel bolt for layout positioning   |
| 900-SS-6      | Set Bronze Anchor - Short Stands (set of 6)<br>Includes: 5/8" x 1" steel bolt for layout positioning  |
| 905-1M/3M     | Single Bronze Anchor Castings - price per each<br>Includes: 5/8" x 1" steel bolt for layout positioning<br>1/2" x 5" steel bolt for positioning in wet cement for 1M/3M |
| 905-1M/3M-8   | Set Bronze Anchor - 1M/3M (set of 8)<br>Includes: 5/8" x 1" steel bolt for layout positioning<br>1/2" x 5" steel bolt for positioning in wet cement for 1M/3M           |
| 901-SS-WD     | Hilti inserts with epoxy and dispenser for Short Stands (set of 6)  |
| 902-SS-ND     | Hilti inserts with epoxy (no dispenser) for Short Stands (set of 6)   |
| 903-SS-1/2-WD | Hilti inserts with epoxy and dispenser 1/2 Kit for Short Stands (set of 3)  |
| 904-SS-1/2-ND | Hilti inserts with epoxy (no dispenser) 1/2 Kit for Short Stands (set of 3)   |
| 906-1M/3M-WD  | Hilti inserts with epoxy and dispenser for 1M/3M (set of 8)   |
| 907-1M/3M-ND  | Hilti inserts with epoxy (no dispenser) for 1M/3M (set of 8)  |
| 908-1M/3M-WD  | Hilti inserts with epoxy and dispenser 1/2 Kit for 1M/3M (set of 4)   |
| 909-1M/3M-ND  | Hilti inserts with epoxy (no dispenser) 1/2 Kit for 1M/3M (set of 4)  |
| 910-DIS       | Hilti Manual Dispenser with cartridge holder  |
| 911-AD        | Hilti Adhesive with brush   |

### **HINGE PARTS AND HINGE PLATE PARTS**

|        |   |
|--------|---|
| C202   | Hinge with aluminum bolts-complete (price each) |
| C202M  | Hinge (male)                                    |
| C202F  | Hinge (female)                                  |
| C203   | Hinge Pin                                       |
| C209   | Nyliner   |
| C210   | O-Ring  |
| C201-1 | 1M/3M Hinge Plate (excludes hinges)             |
| C250   | 1M/3M Hinge Plate (including hinges)            |

## **PAINT**

- MP105 Touch-Up Paint - Buff (1 oz. bottle)
- MP106 Touch-Up Paint - Aqua (includes (1) tube of each: pigment and hardener)
- P167 Calibrated Strip (numbers 1-9 on diving board)

## **BOARD BOLTS (Carriage bolts for bolting board to stand)**

- SF122 5/8" x 3 1/2" Stainless Steel Board Bolts with flat washers, lock washers and nuts (bolts to hinges) (set of 2)
- SF123 Set of washers and lock washers (set of 2) for board bolt
- SF141 5/8" x 5 1/2" Zinc Plated Steel Board Bolt with nut
- SF142 5/8" x 7" Zinc Plated Steel Board Bolt with nut

## **STAND BOLTS (Bolts stand to deck anchors, nuts not required)**

- SF124 5/8" x 1 3/4" Stainless Steel Hex Head Bolt
- SF125 5/8" x 2" Stainless Steel Hex Head Bolt
- SF127 5/8" x 2 1/2" Stainless Steel Hex Head Bolt
- SF129 5/8" x 3" Stainless Steel Hex Head Bolt
- SF138 5/8" Stainless Steel Washer (order 1 per installation bolt)
- SF139 3/4" Stainless Steel Washer (order 1 per ladder installation bolt)

## **FULCRUM PARTS**

- 515 Rubber Bumper
- 516 Anti-Rattle Clamp
- 517 Roller Block w/(1) 518, (1) 521, (1) 524, (1) 515, (1) 516, (2) 526, (1) 528, (1) SF111, (2) 533, (2) SF152
- 518 Slide Bearing
- 521 Roller Clamp
- 522 Tie Plate with (includes (4) 526 Tie Plate Bolt with nut and washer)
- 524 Roller Bearing
- 530 Zerk Fitting (grease gun fitting on roller block)
- 532 Expansion Pin (locks footwheel to roller)
- R510S Footwheel - sold only attached to short roller (for stands without rails)
- R510L Footwheel - sold only attached to long roller (for stands with rails)
- C208 Track 1 1/4" wide (includes 5 bolts)
- FP500L Fulcrum Parts Kit includes:  
Footwheel and long roller, tie plate, 2 roller block assemblies, grease gun and grease
- FP500S Fulcrum Parts Kit includes:  
Footwheel and short roller, tie plate, 2 roller block assemblies, grease gun and grease

### **STAND ASSEMBLY BOLTS**

**Heads of these bolts are painted; we recommend that you order touch-up paint to coat nuts and threads after installation)**

- SF162 3/8" x 1 1/4" Stainless Steel Round Head Bolt, washer & nut for bolting anchor-fitting to ladder
- SF104 3/8" x 1 1/4" Aluminum Flat Head Bolt/Nut for bolting step to ladder
- SF105 3/8" x 1 1/4" Aluminum Hex Head Bolt/Nut for bolting rail supports to fulcrum box and for bolting cross braces to stand frame
- SF106 3/8" x 1 1/2" Aluminum Hex Head Bolt/Nut for bolting hinges to anchor fitting
- SF210 10/32" x 11/16" Aluminum Flat Head Bolt/Nut for step inserts

### **UNPAINTED BOLTS**

- SF108 5/8" x 3" Aluminum Hex Head Bolt/Nut and two washers for bolting fulcrum box to main support

### **ALUMINUM NUTS AND WASHERS**

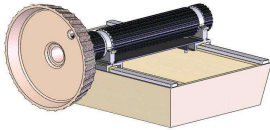
- SF111 Anti-Rattle Lock Nut (included in price of #528)
- SF152 Roller Clamp Lock Nut (included in price of #533)

### **FULCRUM BOLTS AND NUTS**

- 526 Tie Plate Bolt with nut and washer
- 528 Anti-Rattle Bolt with SF111 nut
- 529 Track Bolt (included in price of track #C208A)
- 533 Roller Clamp Stud with SF152 nut

**ONE METER STAND ASSEMBLIES:** (Includes mounting hardware)

**FULCRUM ASSEMBLY WITH STAND BOX:** The stand box is mounted on all Duraflex stand models, however, the mounting hardware varies per model. Specify stand model and if the stand has rails or no rails.



- FB554 Fulcrum Assembly with Stand Box  
(for stands without Hand Rails)
- FB550 Fulcrum Assembly with Stand Box  
(with holes for rail supports and long roller)
- FB400 Stand Box Only  
(Fulcrum box with tracks) holes for rail supports
- FB404 Stand Box Only (Fulcrum box with tracks)  
without holes for rail supports

**MAIN SUPPORT:** (Does not include Fulcrum Assembly or Stand Box)



- 1M450\* Main Support Assembly  
(Only sold as one complete unit)

**LADDER:**



- 1M355 1 Meter Ladder Assembly: includes Steps, Hinge Plate, Hinges and Stainless Steel Board Bolts
- 1M350 1 Meter Ladder Assembly with steps and bolts  
Note: Does not include hinge plate and hinges
- C212 1 Meter Step (each)
- C213 Step Inserts

\*There are 5 heights of One Meter stands, depending on deck elevation above water level

**NOTE:** Slope of deck (direction and rate) will affect stand height choice

## SHORT STAND ASSEMBLIES:

**FULCRUM ASSEMBLY WITH STAND BOX:** Refer to  
One Meter listings

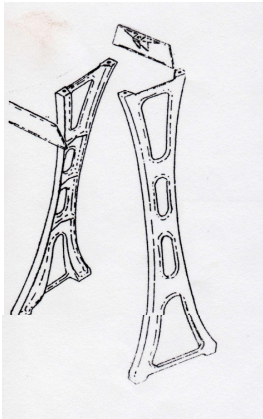
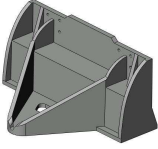
**ANCHOR:** (Please specify if stand has rails or no rails)

SS504 Short Stand Anchor Fitting  
No hinges and no rail brackets

SS500 Short Stand Anchor Fitting  
No hinges but with rail brackets

SS554 Short Stand Anchor Fitting  
Assembly with hinges and  
no rail brackets

SS550 Short Stand Anchor Fitting  
Assembly with hinges and  
rail brackets



## THREE METER STAND ASSEMBLIES:

**FULCRUM ASSEMBLY WITH STAND BOX:** Refer to One Meter listings

**MAIN SUPPORT:** Excludes Fulcrum Assembly with Stand Box (3M450\*)

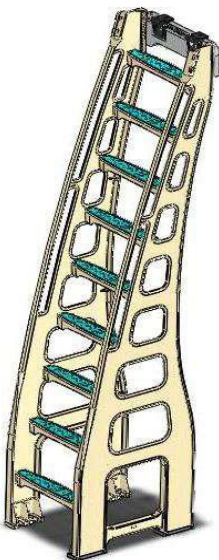
## LADDER:

3M355\* Ladder Assembly with steps,  
Hinge Plate, hinges, Stainless Steel  
Bolts and Crosspiece

3M350\* Ladder Assembly with steps and Bolts  
Note: Does NOT include Hinge Plate of Hinges

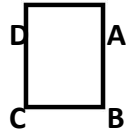
\*There are 3 heights of Three Meter stands, depending on  
deck elevation above water level.

**NOTE:** Slope of deck (direction and rate) will affect stand height choice.



**HAND RAIL ASSEMBLIES:** ("rail packages") The Duraflex factory custom fits rail supports to the fulcrum box of each new Stand it manufactures. Fitting Rail Supports in the field (without factory equipment) will be difficult. Getting the rail sockets to line up will be the problem. We warn that excessive bending of a support may cause it to break.

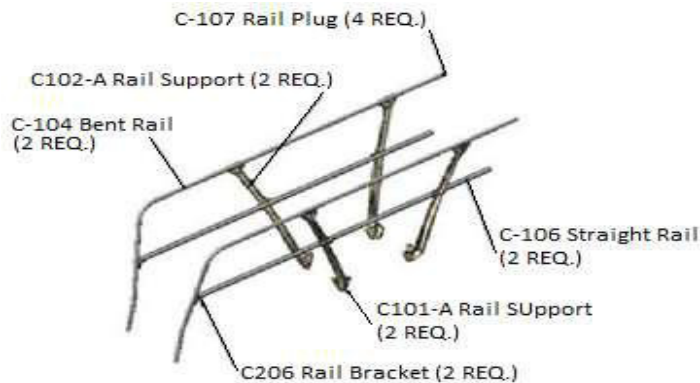
We do fit the supports of a rail package to a random Fulcrum Box at the factory, and label them according to the following diagram. This "pre-fit" may help the customer who then must fit these supports to his own box.



**Note:** You must have a Long Roller to allow full range of adjustment of the Fulcrum on Stands that have Hand Rails. Use part number R510L for stands with handrails.

**SPECIFY WHAT STAND MODEL AND LENGTH OF BOARD YOU HAVE.**

**NOTE:** Duraflex has discontinued production of the "Single Hand Rail" configurations. The only Hand Rail options now are:



**Rail Package with top (curved) rails and intermediate rails on both sides**  
**C100-4R-1M/3M One Meter and Three Meter Rail Package**  
**C100-4R-SS Short Stand Rail Package**

**NOTE:** For Short Stand models add C400L and C400R Aluminum Rail Brackets.